

Alpine Status



Hi-Res Audio Made Accessible



The Alpine Status system features many technologies, components and materials of the AlpineF#1Status system to achieve ultra high-precision music reproduction - at an affordable price tag.

Music tracks at 192kHz / 16bit format are more easily accessible in online stores.

High-Res Audio playback of 192kHz / 24bit allows Alpine Status to create a heightened listening experience in the vehicle that emulates the feeling of an intimate recording studio session.



AlpineF#1Status vs. AlpineStatus

Alpine F#1Status™

1 Fixed System Configuration

Very High System Cost

Closed System

384kHz / 32bit Files Limited Selection

Very Selected Dealers



Alpine Status

Highly Flexible System

Affordable System Cost

Expandable System

192kHz / 16bit Easily Accessible Files

Available Through Alpine Specialist Dealers

Trickle-Down Technology



*From race-track to
street car*

Alpine F#1 Status™

Hi-Res
AUDIO

384kHz / 32bit



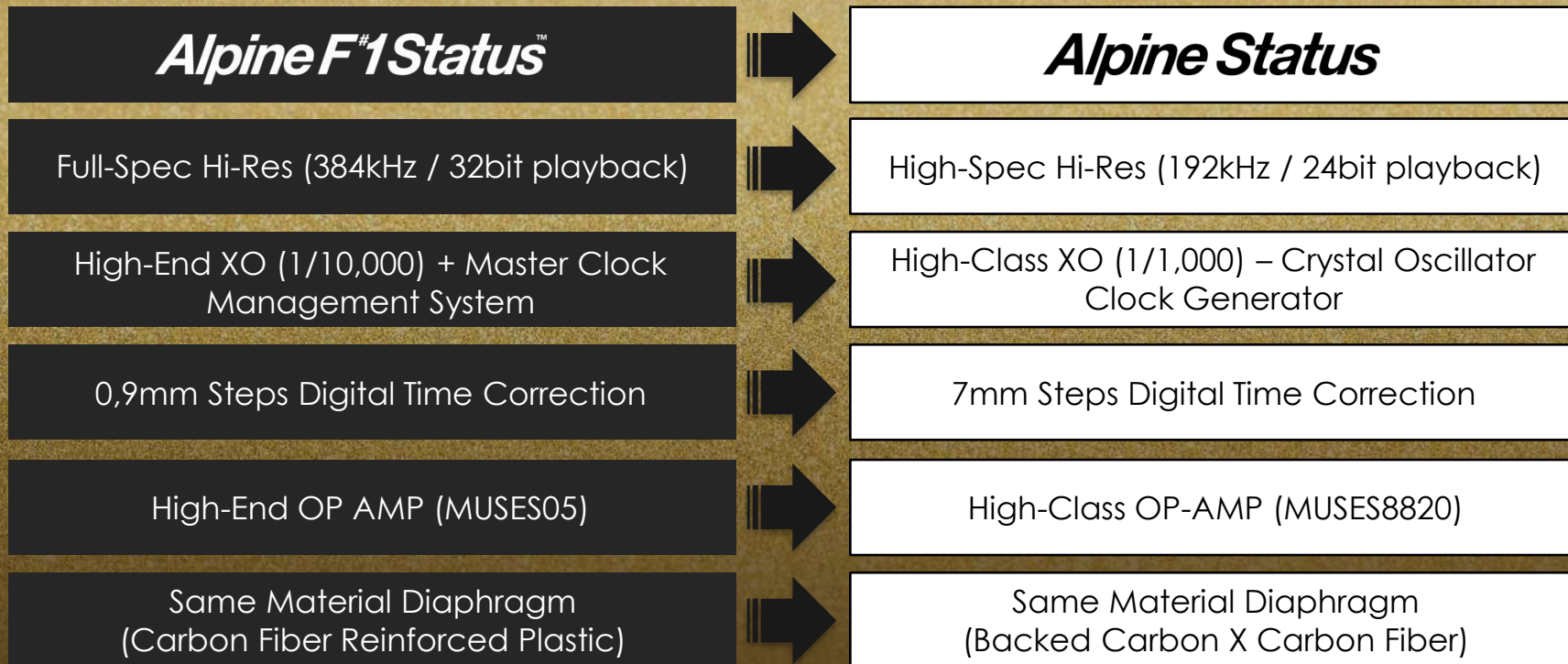
Alpine Status

Hi-Res
AUDIO

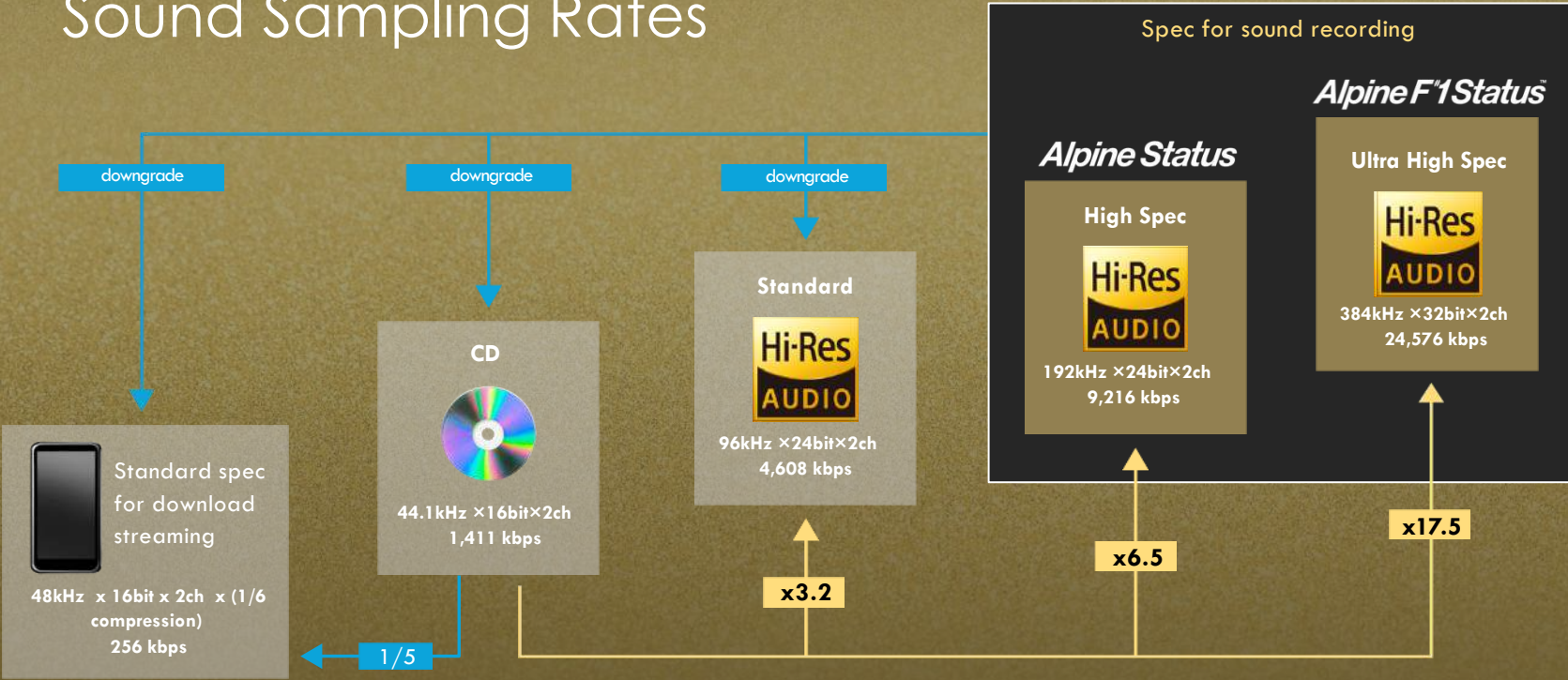
192kHz / 24bit



AlpineF#1 Status Trickle-Down Technology



Sound Sampling Rates



Alpine Status

HEAD UNIT





HI-RESOLUTION DETAIL



Alpine Status
HDS-990 Hi-Res Audio Head Unit



HDS-990

Hi-Res Audio Head Unit

FEATURES

External Control Panel and 1 DIN Media Box

4x 50 Watts Built-In Amplifier

3x USB Ports in Media Box (1x front / 2x back)

192kHz / 32Bit System Sampling Rate

Frequency Response: 20Hz – 40kHz (Hi-Res)

DSP: 6-Ch 31-band EQ

3-Way Digital X-Over

Digital Time Correction

MP3/ WMA/ AAC/ MP4/ WAV/ FLAC/ APE/ DSD



HDS-990

Hi-Res Audio Head Unit

INPUTS

- 4-Ch. High Level Inputs
- 2-Ch. AUX Inputs
- USB Audio
- Bluetooth Audio

OUTPUTS

- 4-Ch. High Level Outputs
- 6-Ch. RCA Outputs
- Optical Output
- Coaxial Output



Front USB Port
Reset Button

HDS-990
1-DIN Media Box



Controller Port

Multiple Line Connector

USB Ports 2 & 3

Hi-Level Inputs

Power-on Selector

Power Supply / Speaker Output

HDS-990
1-DIN Media Box



Display Information

- Input Source Indicator
- Song / Artist / Album Information
- Album Artwork Display
- Media Format / Sampling Rate Display

Rotary Encoder Operation

- Rotate left and right to adjust volume
- Short press to enter song list
- Long press (2 sec) to enter settings interface



Wired USB Connection

Use up to 192kHz / 24bit audio files from a USB device (FAT16/32, NTFS, exFAT)



Bluetooth Audio Streaming

Stream files up to 96kHz / 24bit with wireless convenience from your phone



Bluetooth Audio Codecs

SBC

AAC

aptX

aptX HD

LDAC



Qualcomm[®]
aptX[™] HD



Performance		
Power Output	Rated: 4Ω, 14.4V, 1kHz, 10%THD	4CH×25W
	Maximum: 4Ω, 14.4V, 1kHz, 10%THD	4CH×50W
THD+N	RCA: 14.4V, 4Ω, 1W, A-wt	≤0.03%
S/N (RCA)	RCA: 14.4V, 1kHz, A-wt, 1%THD	≥98dB
Input Voltage	High level: 14.4V, 1kHz, 1%THD	32Vpp
	RCA: 14.4V, 1kHz, 1%THD	8Vpp
Output Voltage	High level: 14.4V, 1kHz, 1%THD	28
	RCA: 14.4V, 1kHz, 1%THD	12Vpp
Input/Output Sensitivity(RCA)	14.4V, 1kHz, 1%THD	1:1.5 (no power amplification)
Frequency Response	14.4V, 1W, 4Ω	20Hz ~ 40kHz (±1.5dB)
Channel Separation	14.4V, 1kHz, A-wt	≥80dB
Noise	RCA	9uVrms
	High level	58uVrms
Dynamic Range		≥100dB
General		
Input Resistance	High level	240Ω
	RCA	10kΩ
Output Resistance	RCA	51Ω
System Sampling Rate		192kHz/32bit
Operating Voltage		9~16V
Quiescent Current		≤3mA (not on state)
Standby Power Consumption		≤0.1W
REM Start Input		High level (FL+/FL-), ACC optional
REM Start Output		12V (0.2A)
Boot Time		15s
Ambient Temperature		-20~70°C
Storage Temperature		-40~85°C
Net Weight		0.77kg
Host Size	Length	178mm
	Width	143.6mm
	High	50mm

Music Player	
Interface	USB 2.0
Capacity	Maximum Support 2TB
Maximum Power Consumption	1.5A
File System	FAT16/32, NTFS, exFAT
The maximum number of songs that can be played	10,000 Songs
Mp3 Decoding	MPEG Audio Layer-3
WMA Decoding	Windows Media™ Audio
AAC Decoding	*.M4a* File in ACC-LC format
WAC Decoding	MPDG Audio Layer-4
FLAC Decoding	Wave Sound File
APE Decoding	Free Lossless Audio Codec
DSD Decoding	Mokey,s Audio
Bluetooth Supports Audio Formats	ACC/SBC/APTX HD/LDAC

Alpine Status

DSP AMPLIFIER





PROCESSING POWER



**Hi-Res
AUDIO**

Alpine Status

HDP-D90 Hi-Res Audio DSP Amplifier



HDP-D90

Hi-Res Audio DSP Amplifier

FEATURES

Highly Flexible System Configuration

Built-in 12-Channel Digital Amplifier

High-Class XO (1/1,000) Crystal Oscillator Clock Generator

Matrix Input Summing

Parametric / Graphic Equalizer (31-Band / Ch)

Digital Time Correction

External Bluetooth Dongle Included

High-Performance PC Software

Pre-configured systems (Software)

Optional Controller Available (RUX-C810)



HDP-D90

Hi-Res Audio DSP Amplifier

SPECS

Power Output: 8 x 50W + 4 x 80W @ 4Ohm, 14,4V

THD+N: RCA 1W into 4Ω <0,01%

Frequency Response: 20Hz – 40kHz

Hi-Resolution 192kHz / 32bit Playback

Internal Sampling Rate: 192kHz / 32bit

S/N: >110db, THD: <0.001

6 Sound Data Presets

Output Delay: 0.000 – 20.000ms

Weight: 4,5kg
Height: 58mm



INPUTS

- 12-Ch. High Level Inputs
- 2-Ch. RCA Inputs
- Optical Input
- Coaxial Input
- Bluetooth Audio (with BT dongle)

OUTPUTS

- 8 x 50W + 4 x 80W @ 4Ohm, 14,4V
- 10-Ch. Pre-Amp Outputs



10-Ch. RCA Outputs

2-Ch. RCA Input

Hi-Power Inputs (SPK level)

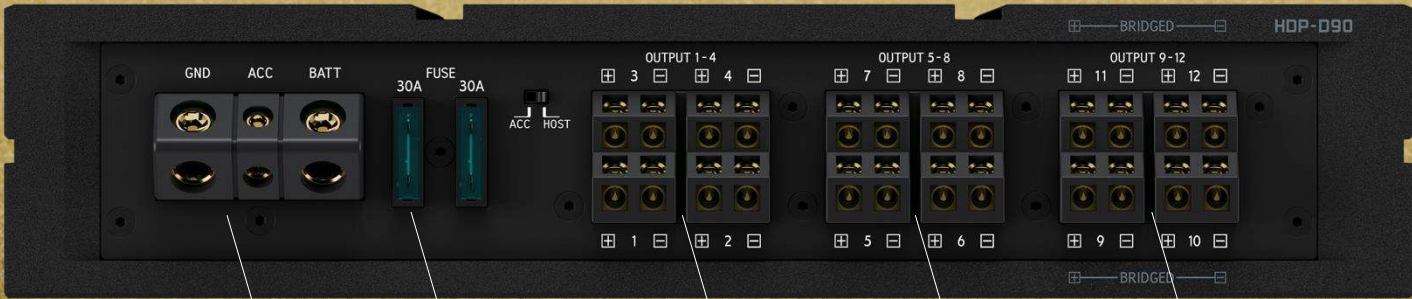
Optical TOSLINK Connector

External Controller Port

USB 2.0 Connector

External BT Dongle Connector





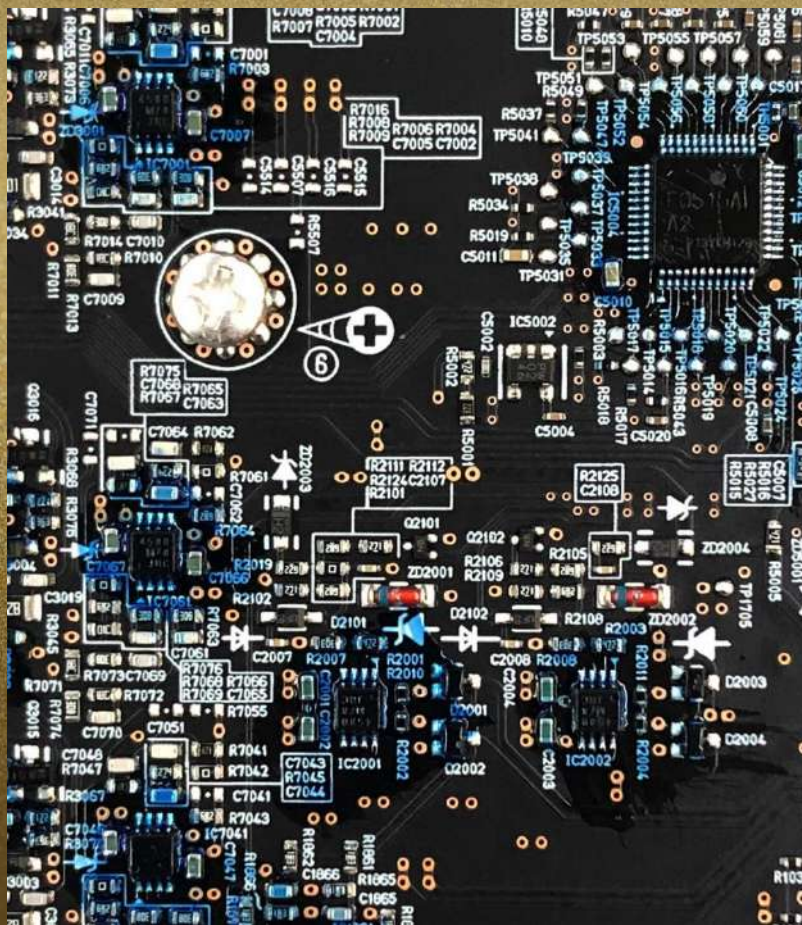
Power Supply / Remote

Fuses (2x 30A)

SPK Level Outputs (Ch. 1-4)

SPK Level Outputs (Ch. 5-8)

SPK Level Outputs (Ch. 9-12)



High Quality Analog Circuit

The operational amplifier is a key device that enhances the performance and sound quality of audio analog circuits. These are the ICs used throughout the circuit to process the analog signals, and to ensure uncompromising sound, we use the MUSES8820, the industry's best operational amplifier, chosen by Alpine sound tuning experts.

In addition, our expertise in analog circuit technology, developed over the years as an audio manufacturer, has been used throughout the product to suppress mutual induction between circuits as well as noise, especially third harmonic components, to the utmost limit, resulting in clear and crisp sound quality.



Bluetooth Dongle

- Included with HDP-D90
- Required for stand-alone systems (without HDS-990) for Bluetooth streaming
- Range 10 meters
- Plug-and-play installation

Alpine Status



50W 2-Way Center 50W

50W

50W

80W

50W

80W

OEM Radio

Analog
12ch
INPUT



HDP-D90



Tweeter (Front)
50W

Midrange (Front)
50W

Woofer (Front)
80W

Tweeter (Rear)
50W

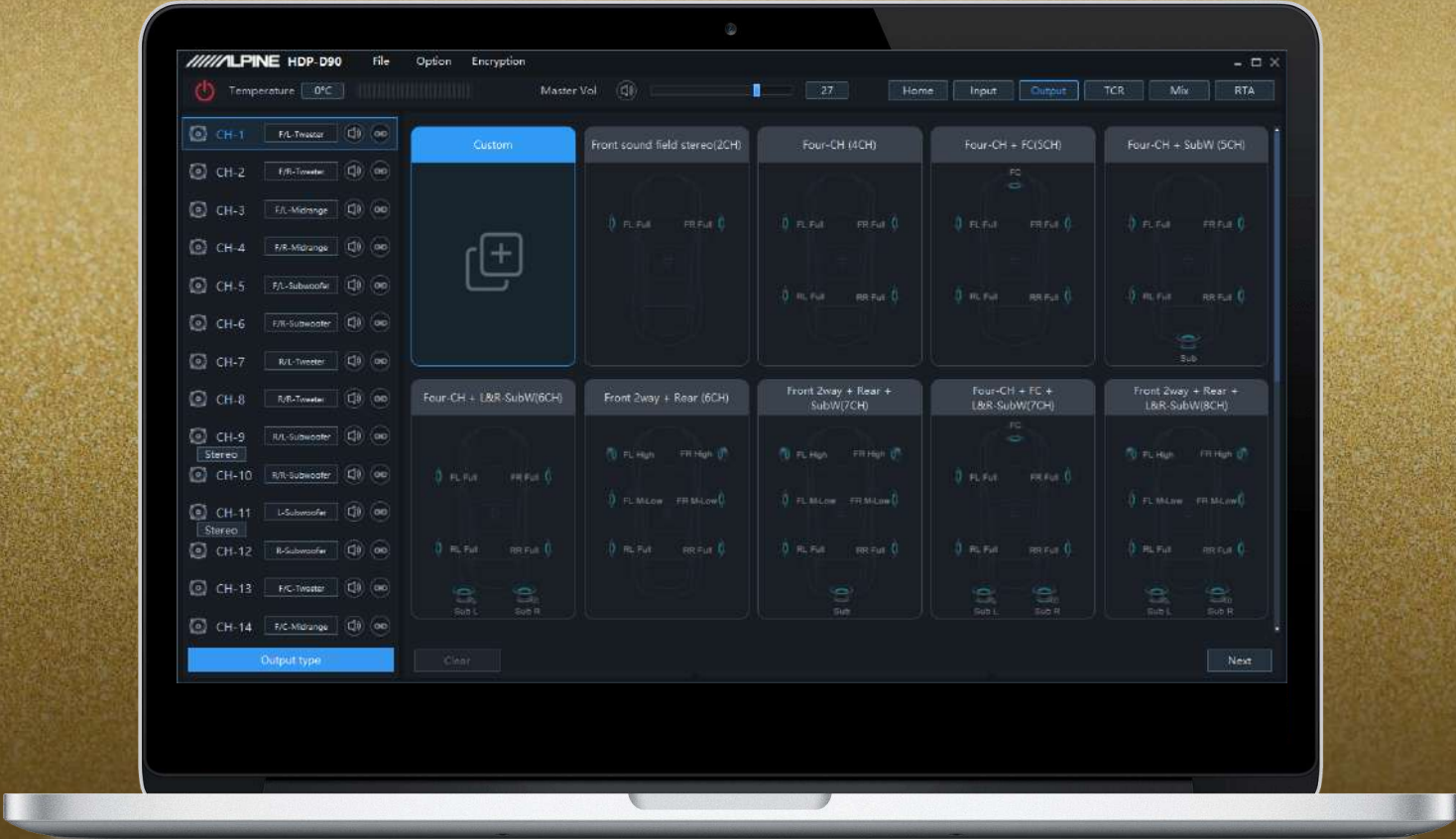
Woofer (Rear)
80W



Dual Subwoofer

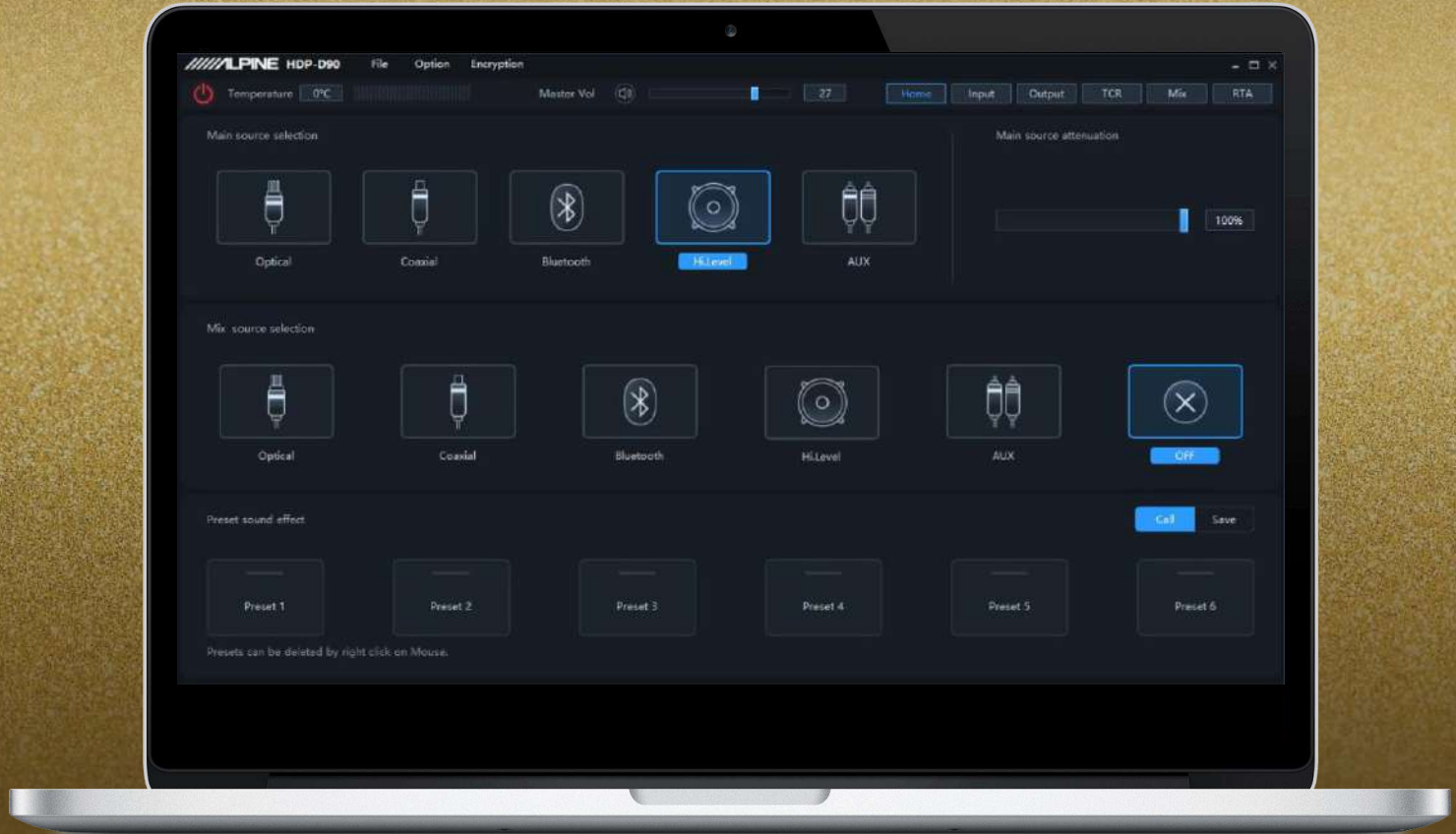
PC Software

System Output Configuration



PC Software

Source Selction





RUX-C810 Controller

- Separately Available
- Required for stand-alone operation of HDP-D90 without Head Unit HDS-990
- Allows basic operation such as volume control, source selection, pre-set selection, etc
- Compact size

Alpine Status

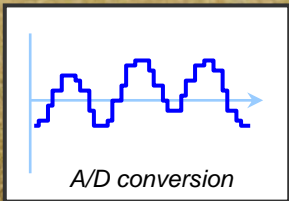
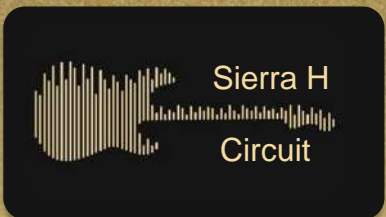
AMPLIFIERS



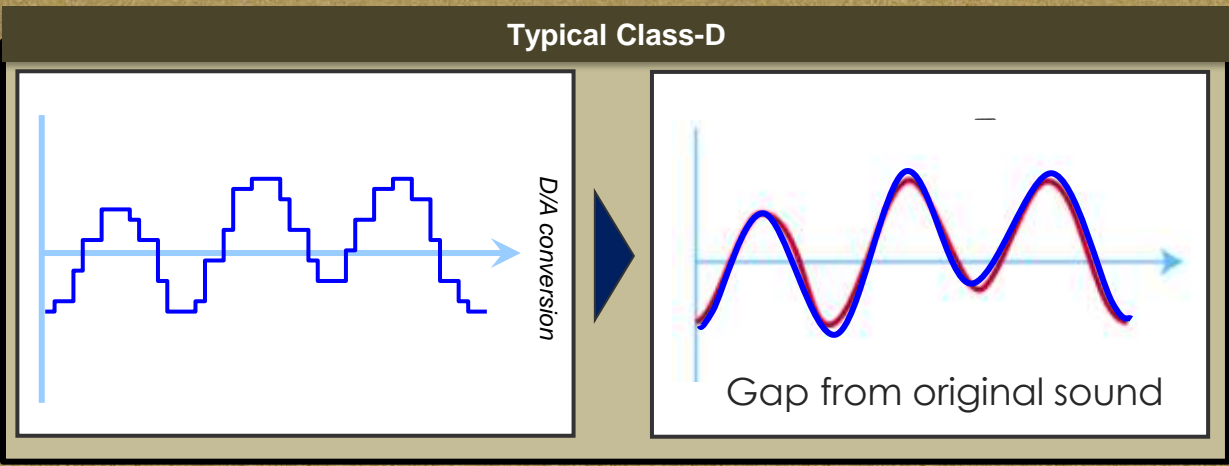
Alpine Status

ALPINE
Emotion in Mobility

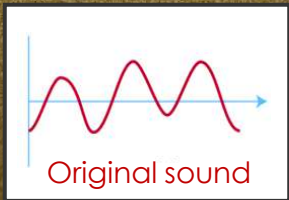
DYNAMIC



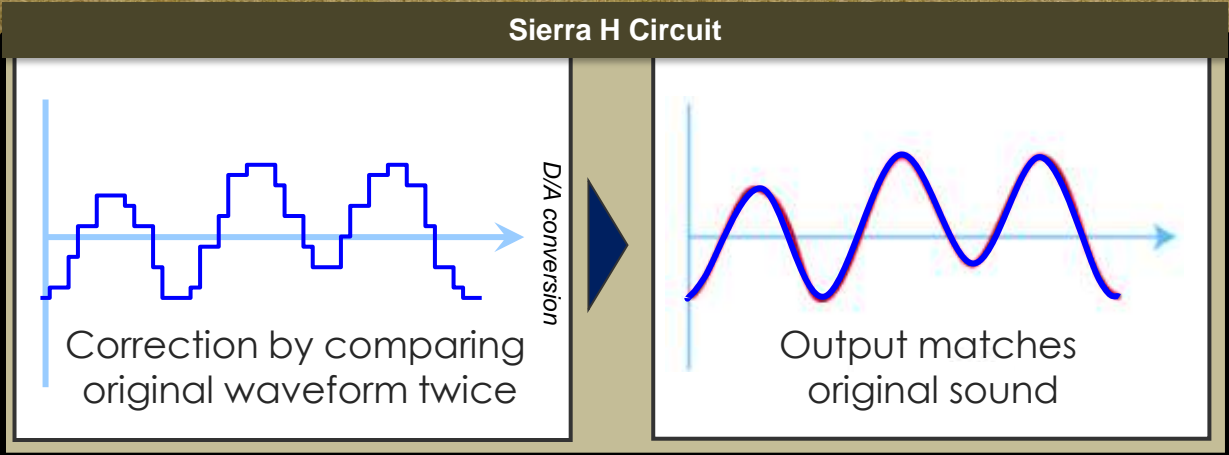
Amplification



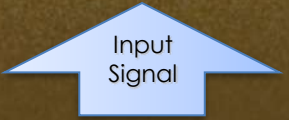
Traditionally, Class D AMPs cannot accurately reproduce the input signal



Compare



Compares and corrects the amplified signal with the original waveform twice to reproduce highly accurate signal



Alpine Status

ALPINE
Emotion in Mobility



Alpine Status

HDA-M80 Mono Power Amplifier



Power Supply & Remote

Fuses (3x 30A)

Input Level Selector (low / hi)

RCA Input / PreOut

Remote Bass Knob Plug

Channel Output

HDA-M80

Digital Mono Amplifier



HDA-M80

Digital Mono Amplifier

FEATURES

RMS Power Output: 1x 500W (4 Ω) / 1x 800W (2 Ω)

Amplification Circuit: Class-D

THD+N: $\leq 0.02\%$ (10W) / $\leq 0.07\%$ (Rated Power)

S/N Ratio: $> 107\text{dB}$

Copper Plated Chassis & Black Circuit Board

AlpineF#1Status Trickle-down Technology

Frequency Response: 8-400Hz (-3dB)

Damping Factor: $> 1,500$

Measurements: W297mm x D192mm x H51mm



Alpine Status

HDA-F60 4-Channel Power Amplifier



Power Supply & Remote

Fuses (2x 35A)

Input Level Selector (low / hi)

RCA 4 Channel Input

Remote Bass Knob Plug
(CH3+4 bridged only)

4 Channel Output



HDA-F60

4-Channel Power Amplifier

FEATURES

RMS Power Output: 4x 100W (4Ω) / 4x 150W (2Ω)

/ 2x 300W (4Ω) Bridged

Amplification Circuit: Class-D

THD+N: ≤0.02% (10W) / ≤0.07% (Rated Power)

S/N Ratio: >106dB

Copper Plated Chassis & Black Circuit Board

Frequency Response: 10-60kHz (Hi-Res)

Damping Factor: >500

Measurements: W297mm x D192mm x H51mm



Alpine Status

HDA-V90 5-Channel Power Amplifier



Power Supply & Remote

Fuses (3x 30A)

Input Level Selector (low / hi)

RCA 5 Channel Input

Remote Bass Knob Plug
(CH5 only)

5 Channel Output



HDA-V90

5-Channel Power Amplifier

FEATURES

RMS Power Output: 4x 75W + 1x 300W (4Ω) /
4x 100W + 1x 500W (2Ω) / 2x 200W (4Ω) Bridged

Amplification Circuit: Class-D

THD+N: ≤0.02% (10W) / ≤0.07% (Rated Power)

S/N Ratio: Ch. 1-4 >105dB / Ch. 5 >104dB

Copper Plated Chassis & Black Circuit Board

Frequency Response: 10-60kHz (Hi-Res)

Damping Factor: Ch. 1-4 >500 / Ch. 5 >1,000

Measurements: W297mm x D192mm x H51mm

High End Sound Quality



Non
Shutdown
Design

>110
dB

Signal-To-
Noise-Ratio

Easy
Installation



Alpine F#1Status
Trickle Down Technology



Sierra H

Circuit



Class-D

Alpine Status



One Sided Terminal



Power
& Speaker
Connectors

Hi-Res
AUDIO

10Hz-
110kHz

Frequency
Response

Cu

Copper
63.546

Copper Shield



3

Configurations

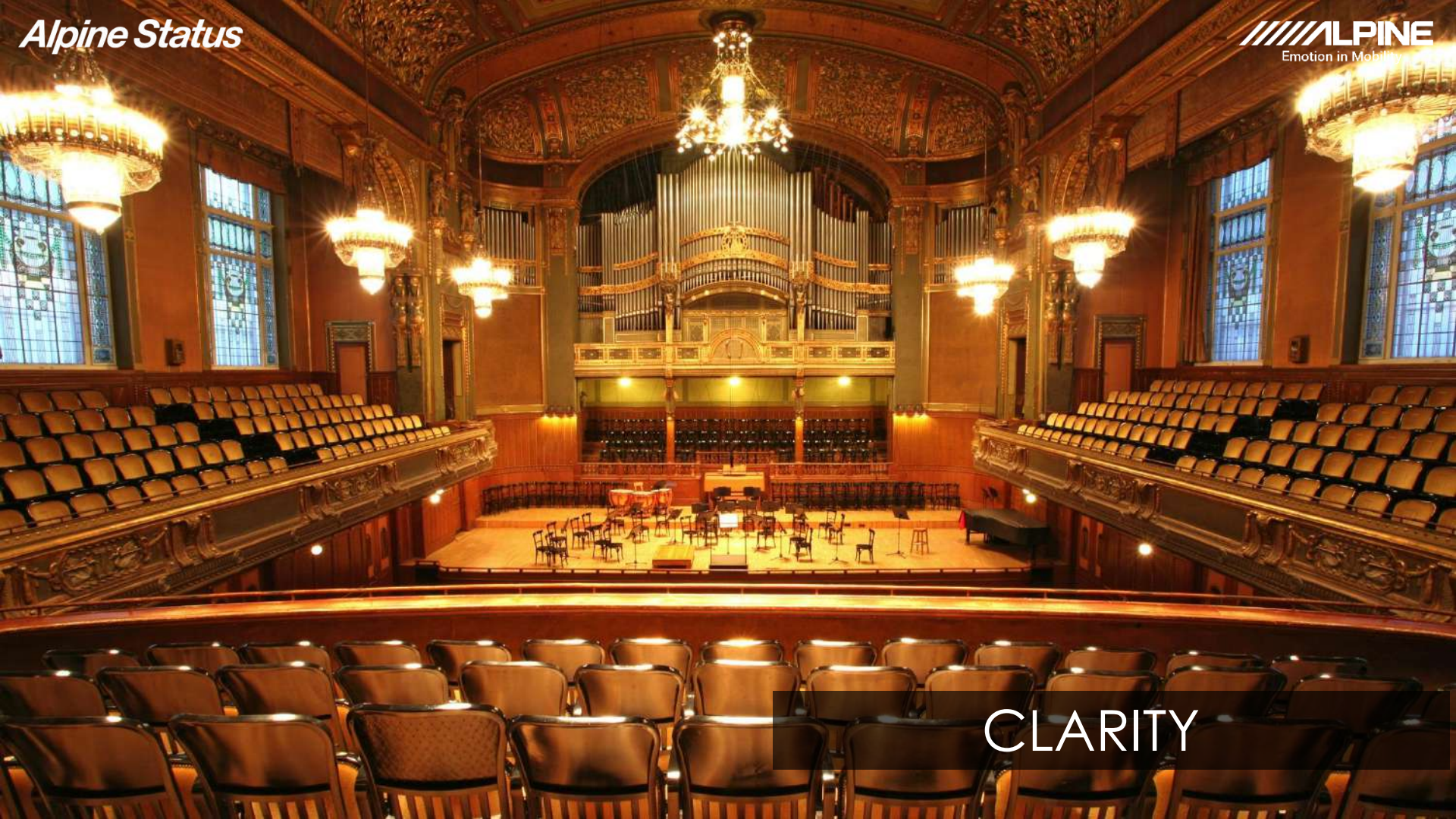


Black
PCB
Board

Alpine Status

SPEAKERS





CLARITY



FEATURES

- Double-gathered Edge (AlpineF#1Status trickle-down technology)
- Wave-Guide
- Carbon-Fiber Cones on all speakers
- Aluminum Die-Cast Baskets
- Ferrite Magnets (Subwoofer & Woofer)
- Neodymium Magnets (Mid & Tweeter)



Carbon Fiber Cones

The subwoofer, woofer, mid-range and tweeters use backed carbon composite cones to achieve a fully unified timbre identity – resulting in excellent harmonics. Carbon is very light and stiff, resulting in high dynamic and low distortion.



Carbon Fiber Material



Same construction technique than in carbon monocoques

Basket / Motor Design

Alle speakers and the subwoofer share the same cosmetic design philosophy for a unified look and feel.





High-End Ring-Radiator Tweeters

Ring-Radiator Design

Carbon-Fiber Diaphragm

Wave Guide

Tuned back-Chamber Design

Neodymium Magnet

Threaded Housing for Installation



High-End Speaker Crossover

High-End Components

Woofer X-Over: 12dB / Oct or 6dB / Oct selectable

Tweeter Level Adjustment: +3dB / 0dB / -3dB

Midrange Speaker Level: 0dB / -3dB (3-Way only)

Removable See-Through Cover



Alpine Status

HDZ-653 3-Way Component Speaker



HDZ-653

6.5" 3-Way Component Speakers

FEATURES

Maximum Peak Power: 300W

Maximum RMS Power: 100W

Sensitivity: 88dB

Frequency Response: 55Hz-40kHz

Impedance: 4Ω

Structure: Carbon Cone & Double Gathered Edge

Woofer: 170mm (177mm with grill)

Midrange: 96mm

Tweeter: 70mm (25mm voice coil)

High-End X-Over Network



Alpine Status

HDZ-65C 2-Way Component Speaker



HDZ-65C

6.5" 2-Way Component Speakers

FEATURES

Maximum Peak Power: 300W

Maximum RMS Power: 100W

Sensitivity: 88dB

Frequency Response: 55Hz-40kHz

Impedance: 4Ω

Structure: Carbon Cone & Double Gathered Edge

Woofer: 170mm (177mm with grill)

Tweeter: 70mm (25mm voice coil)

High-End X-Over Network



Alpine Status

HDZ-653S 3-Way Slim-Fit Component Speakers

Tweeter Differences: Regular vs. Slim-Fit



HDZ-653 / HDZ-65C Tweeter

70mm Alpine Status Tweeter

- Larger magnet & diaphragm
- Tuned back-chamber
- Highest sound quality focus



HDZ-653S / HDZ-65CS / HDZ-65 Tweeter

44mm Alpine Status Slim-Fit Tweeter

- Smaller overall size and diaphragm
- Low installation depth
- High installability focus in OEM locations



HDZ-653S

16,5cm 2-Way Slim-Fit Component Speakers

FEATURES

Maximum Peak Power: 300W

Maximum RMS Power: 100W

Sensitivity: 88dB

Frequency Response: 55Hz-40kHz

Impedance: 4Ω

Structure: Carbon Cone & Double Gathered Edge

Woofer: 170mm (177mm with grill)

Midrange: 96mm

Slim-Fit Tweeter: 40mm (58mm with housing)

High-End X-Over Network



Hi-Res
AUDIO

Alpine Status

HDZ-65CS 2-Way Slim-Fit Component Speakers



HDZ-65CS

16,5cm 2-Way Slim-Fit Component Speakers

FEATURES

Maximum Peak Power: 300W

Maximum RMS Power: 100W

Sensitivity: 88dB

Frequency Response: 55Hz-40kHz

Impedance: 4Ω

Structure: Carbon Cone & Double Gathered Edge

Woofer: 170mm (177mm with grill)

Slim-Fit Tweeter: 40mm (58mm with housing)

High-End X-Over Network



Alpine Status

HDZ-65 16,5cm 2-Way Coaxial Speakers



HDZ-65

16,5cm 2-Way Coaxial Speakers

FEATURES

Maximum Peak Power: 300W

Maximum RMS Power: 100W

Sensitivity: 88dB

Frequency Response: 55Hz-40kHz

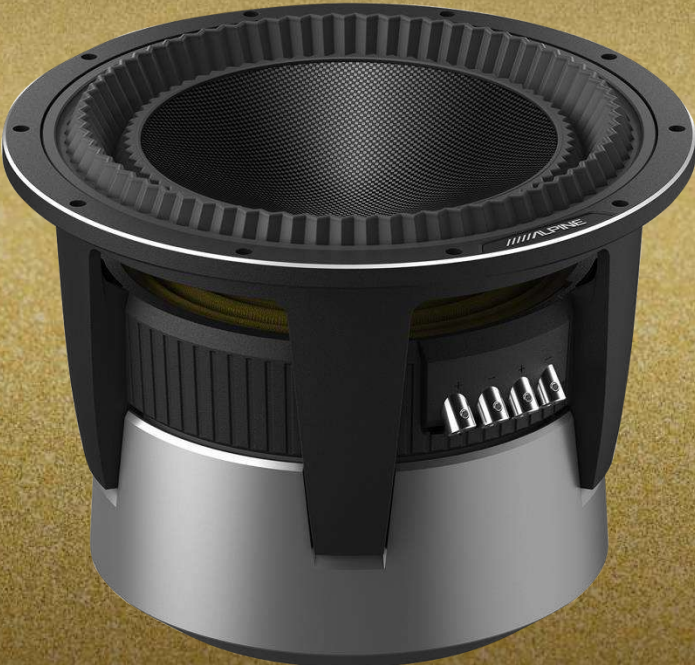
Impedance: 4Ω

Structure: Carbon Cone & Double Gathered Edge

Woofer: 170mm (177mm with grill)

Slim-Fit Tweeter: 40mm

Integrated X-Over Network



Alpine Status

HDZ-110 11-Inch Subwoofer

Measurements



169mm

251mm

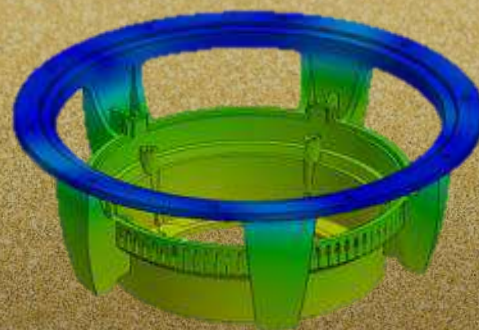
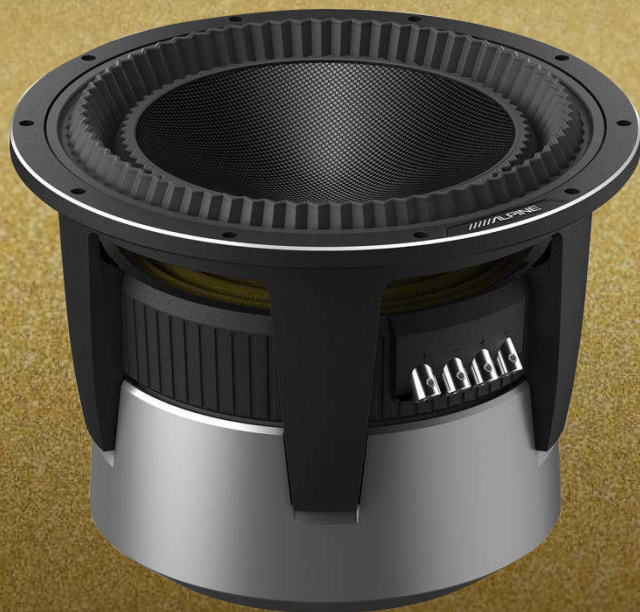


290mm



Carbon Fiber Cone
for highest rigidity and
stiffness & perfect tonal
harmony with the
speakers

Double Gathered Edge
for maximum excursion
with excellent cone
control and stability

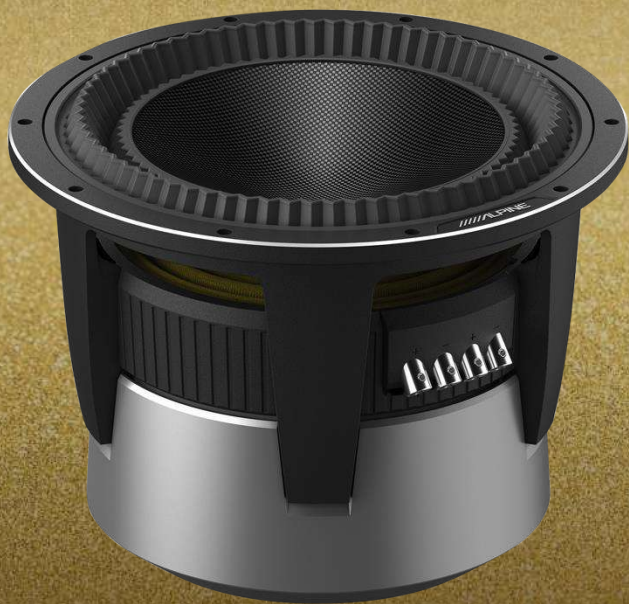


high

vibration level

low

- Frame structure and screw holes chosen for maximum noise and distortion prevention caused by internal vibrations
- Goal was to bring the internal resonance point out of the playback range (achieved at 922Hz)
- 10 screw holes worked best in computer simulations



HDZ-110

11" Subwoofer

FEATURES

Maximum Peak Power: 1200W

Maximum RMS Power: 400W

Dual 2Ω Voice Coils

Frequency Response: 25 Hz – 300 Hz

Hybrid Carbon Cone & Double Gathered Edge

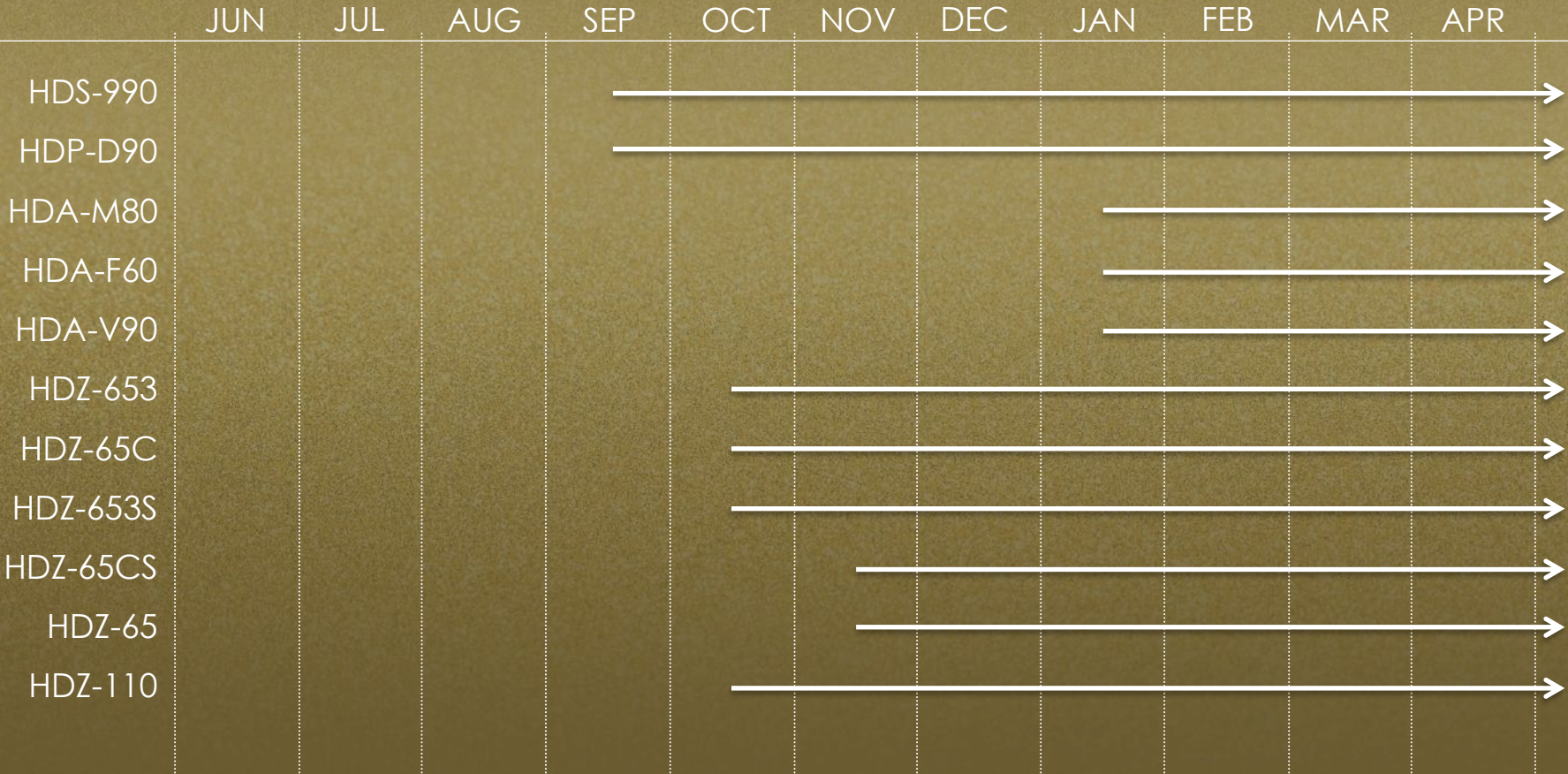
Aluminum Die-cast Frame

Ferrite Magnet

Heavy-gauge Screw-type Terminals

Trickle-Down Technology from Alpine F#1 Status

Introduction



		T1 / T2 Price	Germany SRP Reference
HDS-990	Hi-Res Audio Head Unit	470€	1.399€
HDP-D90	Hi-res Audio DSP Amplifier	620€	1.999€
HDA-M80	Mono Power Amplifier	290€	799€
HDA-F60	4-Channel Power Amplifier	290€	799€
HDA-V90	5-Channel Power Amplifier	365€	999€
HDZ-653	3-Way Component Speakers	400€	1.149€
HDZ-65C	2-Way Component Speakers	290€	899€
HDZ-653S	3-Way Slim-fit Component Speakers	350€	1.099€
HDZ-65CS	2-Way Slim-fit Component Speakers	265€	849€
HDZ-65	Coaxial Speakers	240€	699€
HDZ-110	Subwoofer	245€	799€